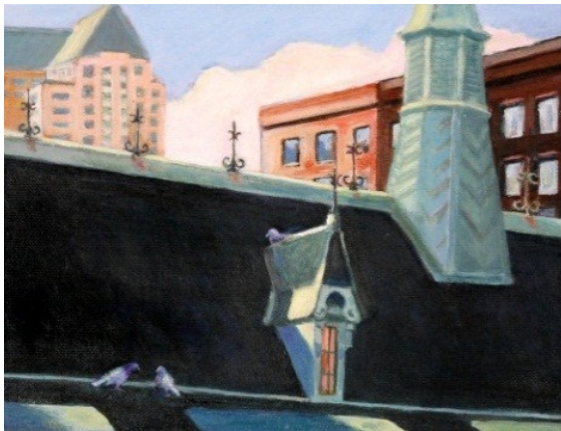


# Town and Country

An exhibit of acrylic paintings

---

When Jean M. Lang came to Wisconsin in her 20s, it was a big change from California's Coast Range where she had grown up. But it didn't take her long to see that the more subtle landscape of Wisconsin's farms and cities had plenty of appeal to the eye. At first she pursued photography to capture these subtleties. Later, after retiring from her work as a science editor, she took up acrylic painting—still drawn to rich colors and the play of light. In this exhibit, Jean shows her paintings of local rural scenes as well as cityscapes.



**February 8 - March 10, 2012**  
**Crossroads Coffeehouse**  
**2020 Main St, Cross Plains, WI**